

## Albumin mAb

**Catalog Number:** 26090

**Gene Symbol:**ALB

**Description:** Anti-Albumin Mouse Monoclonal Antibody

**Background:** Albumin belongs to the ALB/AFP/VDB family. It is a soluble, monomeric protein which comprises about one-half of the blood serum protein. Albumin functions primarily as a carrier protein for steroids, fatty acids, and thyroid hormones, and also plays a role in stabilizing extracellular fluid volume. Defects in Albumin will cause familial dysalbuminemic hyperthyroxinemia (FDH).

**Immunogen:**Albumin protein, human origin.

**Tested applications:** ELISA, WB, IHC

**Recommended dilutions:**

ELISA: 1:1000-1:5000

WB: 1:1000-1:5000

IHC: 1:50-1:100

**Concentration:** 1 mg/ml

**Host:** Mouse

**Clonality:** Monoclonal

**Purity:** Purified from ascites

**Format:** Liquid

**Storage buffer:**

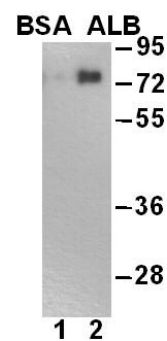
Preservative: no

Constituents: PBS (without  $Mg^{2+}$  and  $Ca^{2+}$ ), pH 7.4, 150 mM NaCl, 50% glycerol

**Species Reactivity:** Anti-Albumin antibody recognizes Albumin from vertebrates.

**Storage Conditions:** Store at -20 °C. Avoid freeze / thaw cycles.

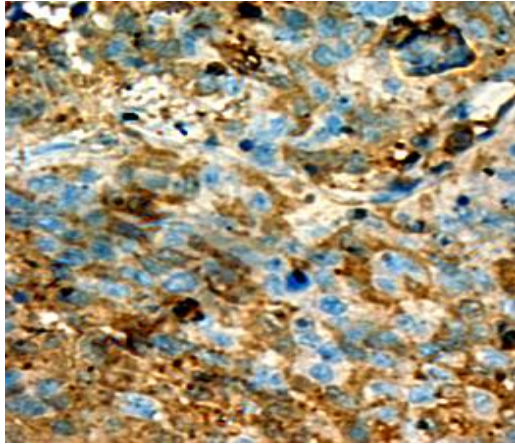
### Western blot:



### WB: Anti-Albumin mAb

Western blot analysis of HSA(Albumin) and BSA proteins. Purified Albumin protein(lane 1)and BSA protein(lane 2)were blotted with anti-Albumin monoclonal antibody(Cat. # 26090)

**Immunohistochemistry:**



**Immunohistochemical analysis of paraffin-embedded liver cancer tissue with anti-Albumin monoclonal antibody (Cat. #26090).** Tissue samples were fixed with formaldehyde and blocked with 1% serum for 15 min at 37 °C. Antigen retrieval was by heat mediation in citrate buffer (pH6). Samples were then incubated with primary antibody (1:50) overnight at 4 °C. A HRP-conjugated Goat anti-mouse IgG (dilution 1:50) was used as secondary antibody.